

# Slickline Services and Explosives Solutions

Our employees rely on decades of experience in the use of explosives in all kinds of wells.



Split Shot: Alternative option in caverns instead of a cutter

You need to plug or cut a tubing, recover a stuck drill pipe or perforate your reservoir layer?

**We can solve your problems!**



Use of a Severing Tool to recover a stuck 5 1/2" drill pipe

**We are also able to do various Types of Slickline Jobs:**

From bailer to tubing end locator, blind box runs, gauge cutter, lead impressions, shift SSD's, pull valves and set them back, install plugs and retrieve them, or do measurements in memory modus up to 177°C

Our specialists are always **open-minded for your requirements** and strive to **offer you the best solution** – also in cooperation with sub-contractors.

We offer you a wide range of solutions in working with

## Explosives and Slickline:

- Setting of permanent and retrievable plugs from 1 3/4" to 9 1/2"
- Severing Tool from 1 3/8" to 2 3/8"
- Cutter for coil tubing and up to 12"
- Guns from 1 1/16" to 7" in BH, GH, SP and SDP
- Chemical Cutter
- Split Shot
- Puncher
- Back off
- Junk Shot
- Link Jet perforation (usually use in water wells)
- Perforation under balance (soon available)

On Slickline or with Lock Mandrel:

## Memory Measurements

- Pressure/Temp Gauges
- Production Logging Tool

## Also possible

- Using of Explosives on Slickline with Intelligent Trigger System
- Tubing Conveyed Perforation (TCP) with dual detonating system

# The leading provider of Hydraulic Workover, Snubbing, Wireline, Completion and Well Control Services

## Together we are strong!

Our enduring strength is our commitment to achieving the highest possible industry standards for Quality, Health, Safety and Environmental protection. By continuously developing best-in-class practices we provide clients with the best quality services.

Our equipment conforms to all regulatory requirements of the geographical areas in which we work in today – and we have plans for tomorrow.

## We do not compromise!

The right way, the safe way, 24 hours a day around the globe.



ISO 9001 / 14001  
OHSAS 18001  
SCC Petroleum

## We perform best under pressure!

From live well Snubbing to dead well Hydraulic Workover, we are able to deliver and manage the entire package, from wireline to well control and engineering – no job too rough or too tough! We are proud of our distinguished operational performance and long track record of success with major companies providing:

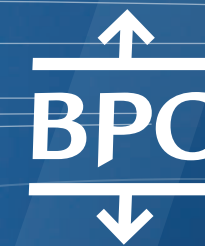
- Well redevelopment projects
- Milling/Fishing/Well clean outs
- Sand screen deployment
- WL/TC Perforation
- Production-/Well Integrity Logging
- Pipe/Casing cutting
- Wellhead change-outs
- Abandonments
- UB/OB (casing) drilling
- Underbalance- (UB) Well deepening/Liner installation
- Velocity string installation
- ESP/Safety valve installation and change-outs
- Well clean outs and other services
- Completion Services



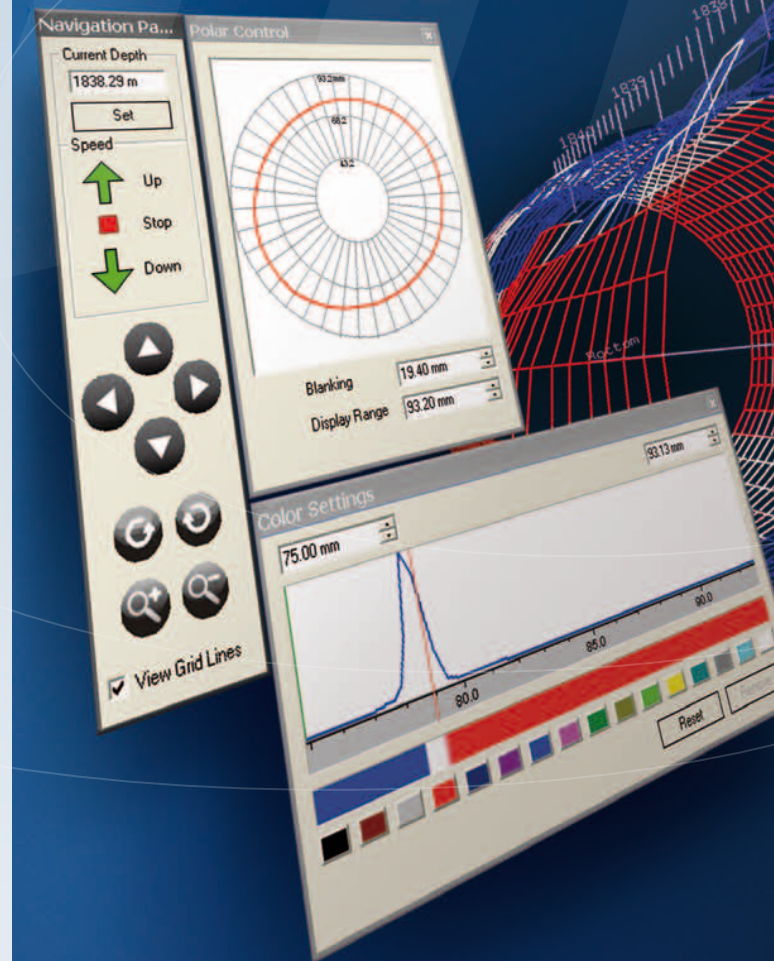
**Balance Point Control B.V.**  
Karel Doormanstraat 4  
7825 VT Emmen • The Netherlands  
T: +31-591-667-687  
F: +31-591-667-680  
E: info@bpc.nl  
www.bpc.nl

**Balance Point Control GmbH**  
Bruchkampweg 28  
29227 Celle • Germany  
T: +49-514-182-033  
F: +49-514-186-069  
E: info@bpc.nl  
www.bpc.nl

**Balance Point Control Ltd.**  
Cumberland House, Endeavour Drive,  
Arnhall Business Park, Westhill  
Aberdeenshire AB32 6UF • United Kingdom  
T: +44-1224-215-395  
F: +44-1224-215-390  
E: info@bpc.nl  
www.bpc.nl



# Balance Point Control



# Wireline Services

# BPC Wireline offers cased hole logging in real time.

... fit for purpose technology that solves your operational and evaluation needs both onshore and offshore.

Many years of experience contribute largely to the success of our operations. We are committed to deliver flexible, cost efficient and high quality services.

Our Wireline Units are designed and built according to the latest standards as double drum units.

For this reason we can offer you slickline and e-line services from one source and with only one mobilization. The combined teams of slickline and e-line experts together in one crew also provide you an easier communication onsite.



## Truck-mounted Double-Drum Onshore-Units

### Technical Data

Manufacturer:	Koller
Drum capacity (7/32" Mono-conductor cable):	7.500 m
Drum capacity (0.125" Slickline):	8.000 m
Line Speed:	0 – 400 m/min.
Maximum pull:	2,7 kN



## Double-Drum Offshore-Units

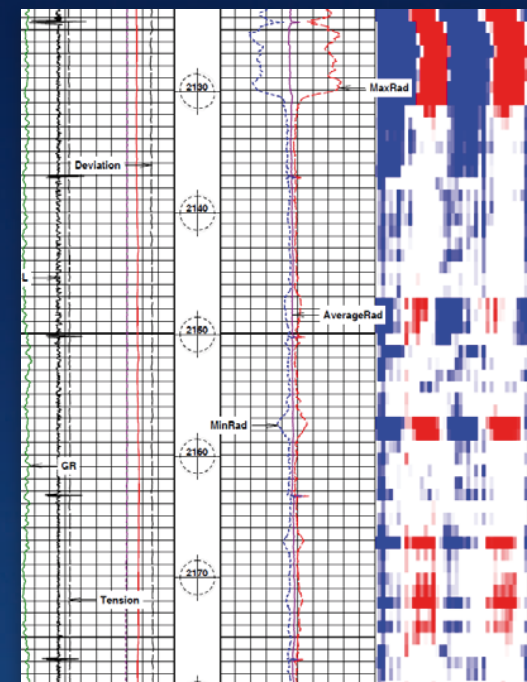
### Technical Data

Manufacturer:	ASEP
Drum capacity (7/32" Mono-conductor cable):	8.350 m
Drum capacity (0.125" Slickline):	9.150 m
Line Speed:	0 – 400 m/min.
Tare Weight:	5000 kg

## Multifinger Imaging Tool (MIT, 3D)

40 measuring fingers and the centralizing fingers are opened and closed by a motor. The caliper works centralized and, supported by springs, the measuring fingers move along the inner casing wall.

The Displacement of each finger is reflected to its sensor directly and all the displacement signals get processed, coded, and transferred to surface.



### Logging Parameter

Rec. min. casing diameter:	80 mm (3.15")
Rec. max. casing diameter:	210 mm (8.28"), with special extension: 244 mm (9.625")
Measuring Accuracy:	1mm (0.04" diameter)
Sensitivity:	0.1mm (0.004")

Tool Deviation:	
Accuracy:	±5°
Sensitivity:	0.1°
Measuring Range:	0-180°

Relative Azimuth:	
Accuracy:	±5°
Sensitivity:	0.1°
Measuring Range:	0-360°

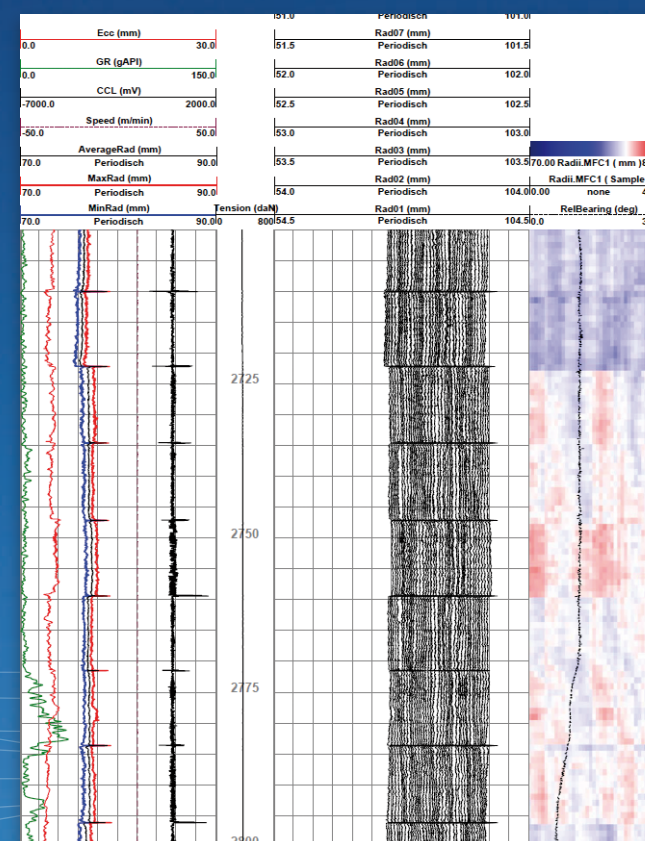
Min. Space btw. 2 Fingers:	6.277mm
Max. Space btw. 2 Fingers:	16.476mm
Min. Resolution Radius:	0.1mm

### Data

- Natural GR/CCL
- Temperature
- Inclination
- Max/Min/average of inner diameter
- VDL and 3D visualization

### Technical Specifications

Diameter:	72 mm (2.875")
Length:	2.38 m (93.82")
Number of Fingers:	40



## Pulsed Decay Neutron (PDN) – Saturation Tool

The Pulsed Decay Neutron Instrument contains an advanced neutron generator design and fast efficient gamma ray detectors.

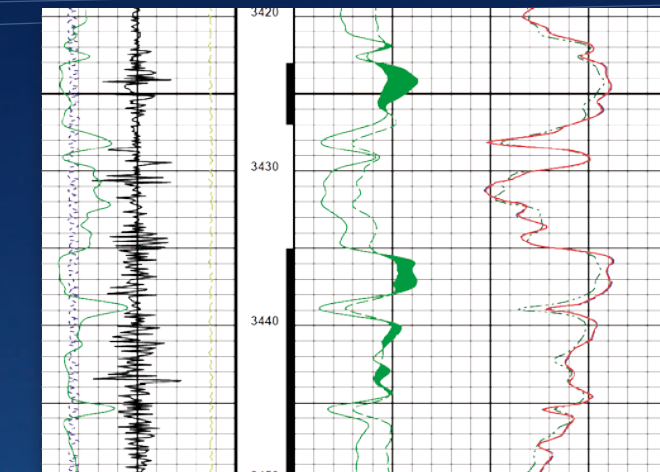
The instrument measures the thermal neutron capture cross-section ( $\Sigma$ ) from which other information can be generated (e.g. water saturation of an oil or gas bearing formation). In addition to the gamma rays, head voltage and electronics temperature are measured.

Another important advantage is that no radioactive source is needed.

Manufacturer: Antares

### Logging Parameter

Rec. min. hole diameter:	70 mm
Rec. max. hole diameter:	300mm
Measuring Range:	
Sigma:	0-200
Accuracy:	2 % of the reading
Vertical resolution:	400 mm



### Technical Specifications

Diameter:	43 mm (1.693")
Length of tool:	7,36 m (289.77")

### Data

- LS (Long Spacing detection)
- SS (Short Spacing detection)
- Sigma
- Natural GR/CCL

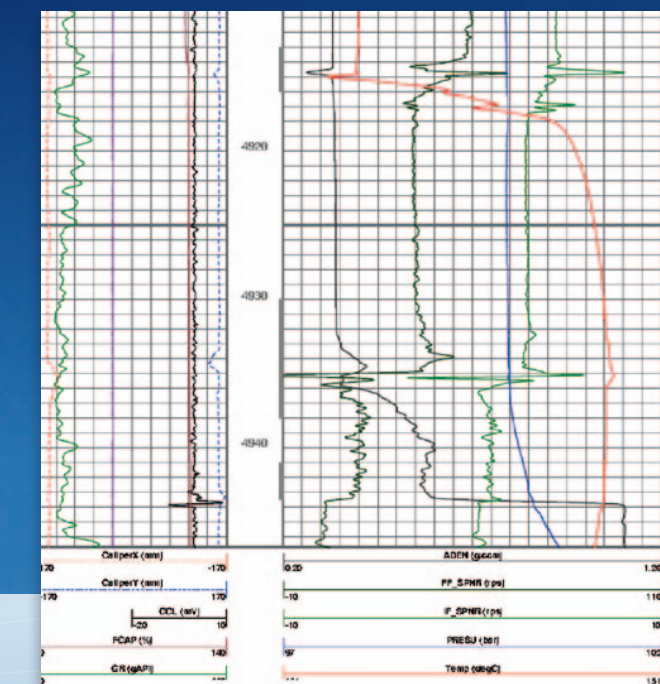
## Production Logging Tool (PLT)

With the PLT we have the possibility to differentiate every single sensor. The configuration depends on the needs from the client.

Manufacturer: Spartek

### Available Sensors

- GR-CCL
- Pressure and Temperature (Two detectors)
- Acoustic Density
- XY Caliper
- Capacitance
- In line Flowmeter
- Flowmeter (Caged or not caged)



Further capabilities of BPC Wireline in

### Real Time Measurements:

- Free Point Indicator (FPI) with CCL, tension, torque
- PDN Temp (Blanket Tool) for fluids contact determination (short version, 4,36 m long)
- 4-Arm-Caliper
- CBL/VDL (new service)
- Pressure/Temperature inclusive natural GR/CCL
- GR dual detector inclusive natural GR/CCL
- GR/CCL
- Camera
- Sampler (2 litres)